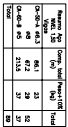
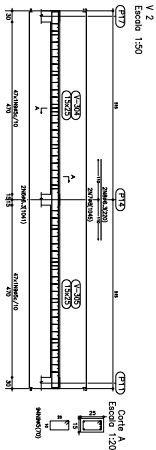


Elements	Pyroclastic Q				Pyroclastic G				Pyroclastic B				Pyroclastic R			
	SiO ₂ (wt%)	TiO ₂ (wt%)	Al ₂ O ₃ (wt%)	FeO (wt%)	SiO ₂ (wt%)	TiO ₂ (wt%)	Al ₂ O ₃ (wt%)	FeO (wt%)	SiO ₂ (wt%)	TiO ₂ (wt%)	Al ₂ O ₃ (wt%)	FeO (wt%)	SiO ₂ (wt%)	TiO ₂ (wt%)	Al ₂ O ₃ (wt%)	FeO (wt%)
9.1	65.2	0.1	15.8	1.2	65.2	0.1	15.8	1.2	65.2	0.1	15.8	1.2	65.2	0.1	15.8	1.2
9.2	65.2	0.1	15.8	1.2	65.2	0.1	15.8	1.2	65.2	0.1	15.8	1.2	65.2	0.1	15.8	1.2
9.3	65.2	0.1	15.8	1.2	65.2	0.1	15.8	1.2	65.2	0.1	15.8	1.2	65.2	0.1	15.8	1.2
9.4	65.2	0.1	15.8	1.2	65.2	0.1	15.8	1.2	65.2	0.1	15.8	1.2	65.2	0.1	15.8	1.2
9.5	65.2	0.1	15.8	1.2	65.2	0.1	15.8	1.2	65.2	0.1	15.8	1.2	65.2	0.1	15.8	1.2
9.6	65.2	0.1	15.8	1.2	65.2	0.1	15.8	1.2	65.2	0.1	15.8	1.2	65.2	0.1	15.8	1.2
9.7	65.2	0.1	15.8	1.2	65.2	0.1	15.8	1.2	65.2	0.1	15.8	1.2	65.2	0.1	15.8	1.2
9.8	65.2	0.1	15.8	1.2	65.2	0.1	15.8	1.2	65.2	0.1	15.8	1.2	65.2	0.1	15.8	1.2
9.9	65.2	0.1	15.8	1.2	65.2	0.1	15.8	1.2	65.2	0.1	15.8	1.2	65.2	0.1	15.8	1.2
9.10	65.2	0.1	15.8	1.2	65.2	0.1	15.8	1.2	65.2	0.1	15.8	1.2	65.2	0.1	15.8	1.2

[illegible]